



**STUART  
CHARLES**  
ESTATE AGENTS



## Rockingham Road

, Corby, NN17 1JW

£875 Per month



# Rockingham Road

, Corby, NN17 1JW

£875 Per month



## Entrance

Electric roller doors, double glazed door and windows to the front elevation.

## Kitchenette

6'07 x 5'10 (2.01m x 1.78m)

Space for washing machine and under counter fridge.

## Guest WC

6'07 x 3'05 (2.01m x 1.04m)

A two piece suite comprising a wash hand basin and pedestal, radiator and double glazed window the front elevation.

## Work room one

18'11 x 8'06 (5.77m x 2.59m)

Double glazed window to the rear elevation, air conditioner unit.

## Work room two

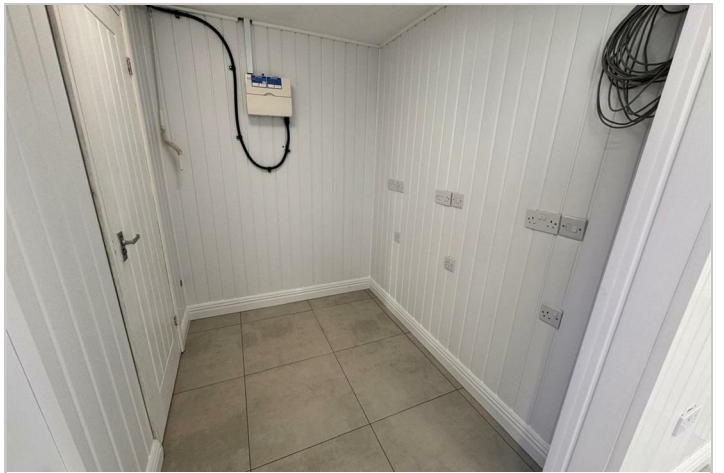
9'11 x 9'08 (3.02m x 2.95m)

Double glazed French doors to the rear elevation.

## Outside

Patio area leading to a laid lawn, outside power, all enclosed by timber fence surround.





Road Map



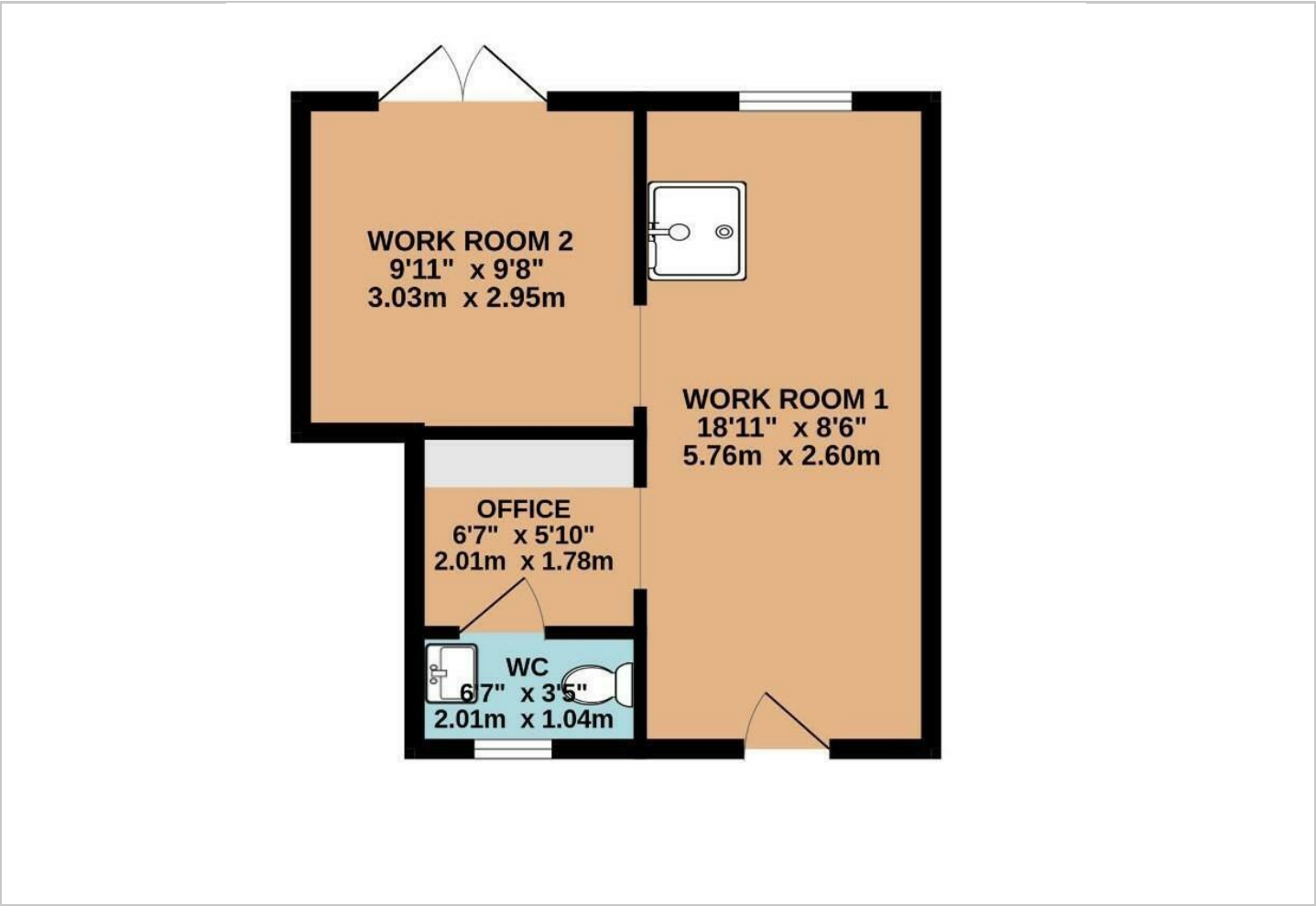
Hybrid Map



Terrain Map



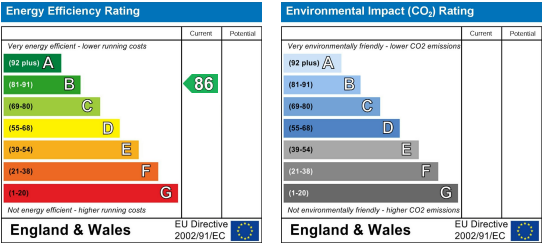
Floor Plan



Viewing

Please contact our Stuart Charles Estate Agents Office on 01536 234264 if you wish to arrange a viewing appointment for this property or require further information.

Energy Efficiency Graph



These particulars, whilst believed to be accurate are set out as a general outline only for guidance and do not constitute any part of an offer or contract. Intending purchasers should not rely on them as statements of representation of fact, but must satisfy themselves by inspection or otherwise as to their accuracy. No person in this firms employment has the authority to make or give any representation or warranty in respect of the property.